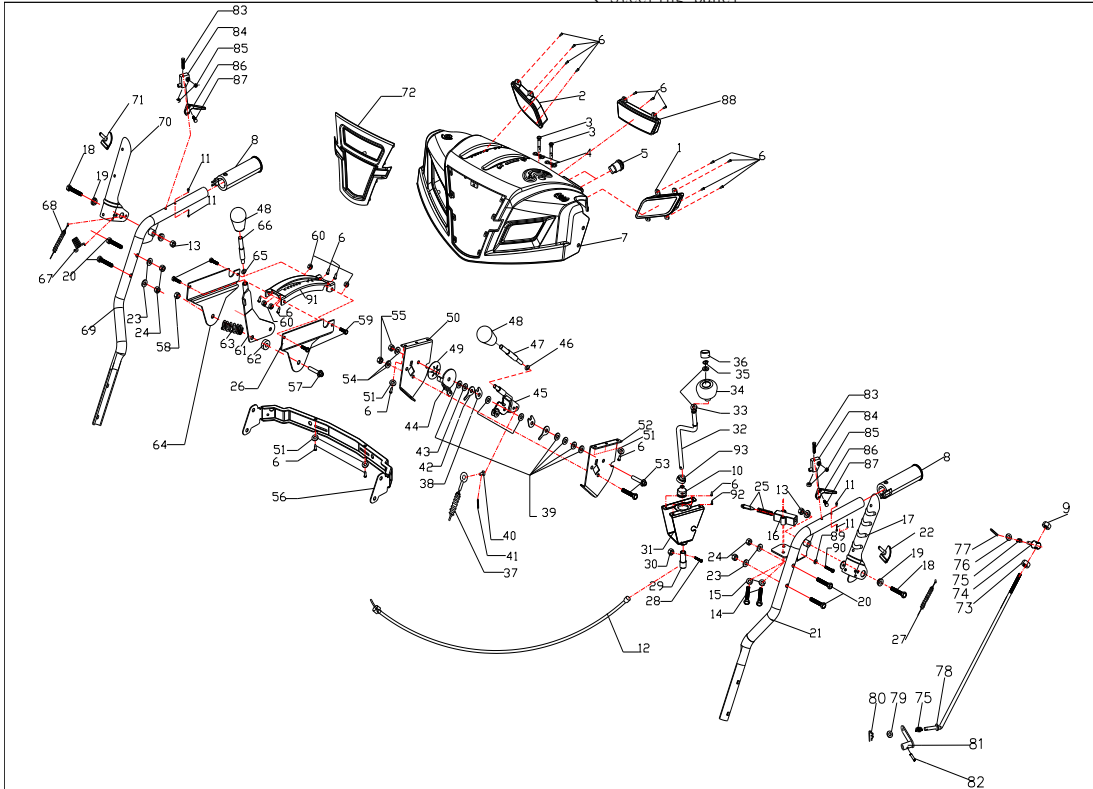


Для моделей серии MV 2015-1A/B panel assembly

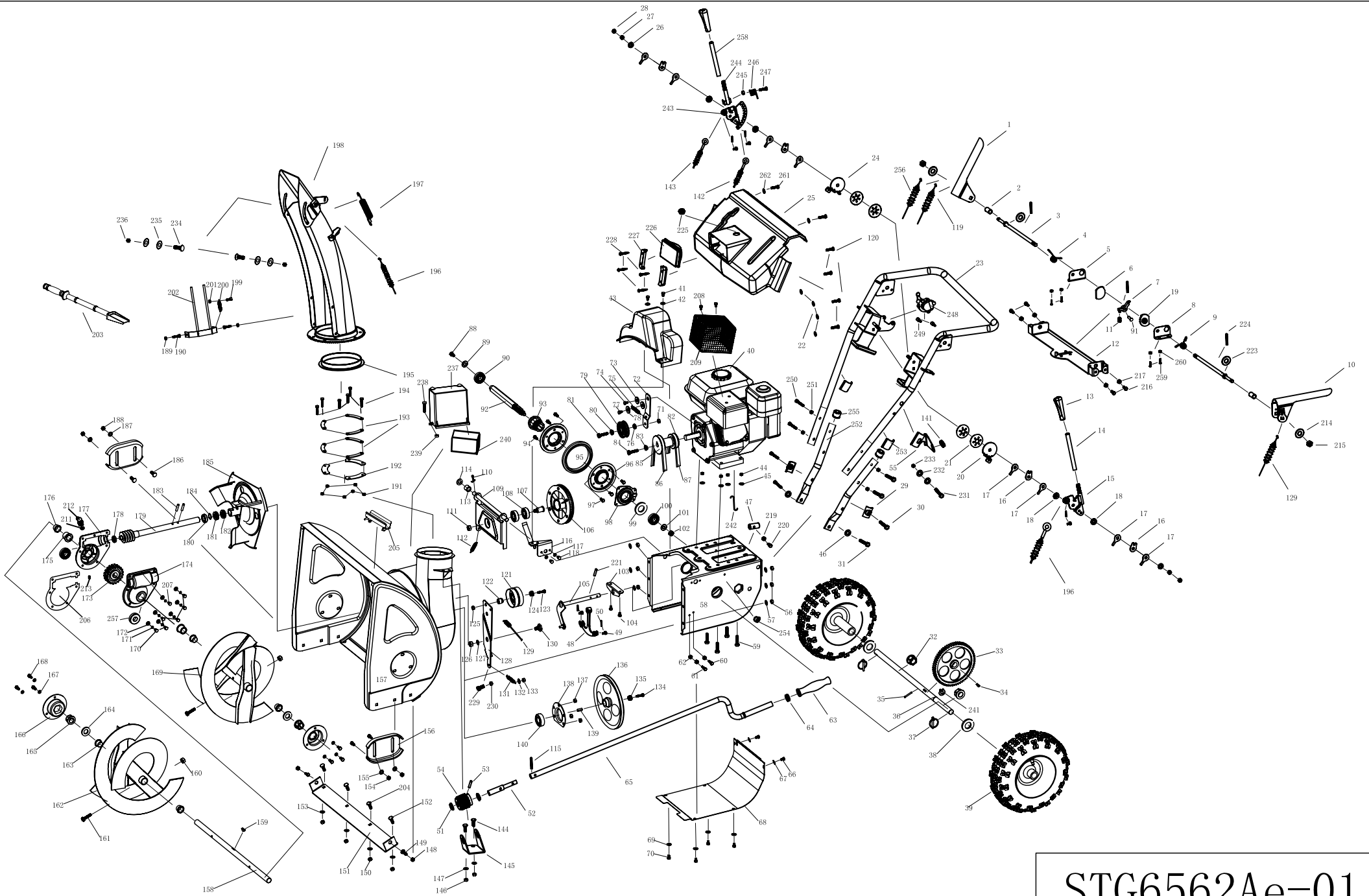
一、Steering panel



序号	级别	Артикул	编码	English	数量	材料与规格
1	2		13.1.10.01.003	Left head lamp	1	组件 12V
2	2		13.1.10.01.004	Right head lamp	1	组件 12V
3	2	NJ-01	WCM00000S05018	shear pin	2	
4	2	NJ-02	WCY00000S05019	pin buckle	2	
5	2	SA-011-2015	13.1.10.04.002	Switch FT 22	2	12V16A.4针脚
6	2	SH-4.2*16	WBZSH04801200	recessed pan head tapping screw	26	STØ4.2*16
7	2		05.1.10.010	Panel	1	PP
8	2	SX-11-008	ZZSTPRS22037	warm handel sleeve	2	TPR
9	2	NHLN-8	WBZHL000008001	lock nut	1	M8
10	2	ZY-106	XQT000S48003	rubber sleeve 1	1	PU
11	2	BE-4*12	WBZMD00401200	rebite	4	Ø4*12
12	2	2015-011		flexible shaft	1	组件<外购>
13	2	NHLN-8	WBZHL000008001	lock nut	2	M8
14	2	HS-6*18	WBZHS006018001	bolt	2	M6*18
15	2	SW-6	WBZSW000006001	spring gasket	2	Ø6
16	2	2012-KEY-04	WFJ00000S26109	Self-locking mounting	1	粉末冶金
17	2	2011-SX-11-031-4	ZWX000S26053	left handle welding	1	A3
18	2	HS-8*55	WBZHS008055001	bolt	2	M8*55
19	2	SJ-046-1	WFJ00000S05074	Small tensioning pad	4	粉末冶金
20	2	HFB-8*40	WBZHF008040001	flange bolt	4	M8*45
21	2	NF-002-L-B	ZPS000S26056	handel upper tube weld	1	
	3	NF-002A(L)	ZJGS00026057WS	handel upper tube	1	
	3	2011-KEY-01	ZHJ000S26058WS	interlock plate welding assembly	1	
	3	2011-KEY-01-02	ZJG000S26059WS	left clutch fixed plate	1	
	3	2011-KEY-01-03	ZJG000S26060WS	Clutch mounting	1	
	3	SJ-236	ZJG000S16037WS	wire block	1	
22	2	SJ-047-1	ZZS0PUS05086	SJ rubber cap	2	PU
23	2	FB-8*16*1.2	WBZPD08161290	gasket	4	Ø8*Ø16*1.2
24	2	NHLN-8	WBZHL000008001	lock nut	4	M8
25	2	11-SX-11-36K	LKZ1450643001	interlock cable	1	
26	2	NF-001-4-01	WCY00000S26069	Gear rack (left)	1	A3

27	2	SX-11-036B-2	LKZ2051395001	Auger cable	1	
28	2	HS-4*20	WBZHS004020001	bolt	1	M4*20
29	2	2015-004		flexible shaft sleeve	1	45
30	2	NHLN-4	WBZHL000004001	lock nut	1	M4
31	2	2015-01		Rocker block assembly	1	
	3	2015-01-001		Rocker block	1	Q235冷压板
	3	2015-01-002		Rocker block 3	1	Q335冷压板
	3	2015-01-003		flexible shaft 2	1	A3
32	2	ZY-051	WCM00009S4802	Rocker	1	Q235
33	2	FB-10*20*1	WBZPD10201090	gasket	2	Ø10*Ø20*1
34	2	SL-8-11	ZZS0PPS38087	arge chute steering adjust han	1	PP
35	2		WBZZK00001000	external plier	1	0 (GB/T984、2-1986
36	2	SL-8-03	ZZS0PUS38086	arge chute steering handle ba	1	PU
37	2	SX-11-36E	LKZ1781460001	discharge chute wire	1	
38	2	SJ-215	ZWX000S16021	U shape fiche	2	
39	2	FB-8*22*2	WBZPD082220001	gasket	5	Ø8*22*2
40	2	SJ-233	WCM00000S16047	wire pin	1	A3
41	2	OSP-2.0*29	WBZKX02002900	Cotter pin 2	1	2.0*29
42	2	SJ-224	WCY00000S16022	Calabash card	2	
43	2	SA-008	WCY00000S16094	Curved elastic gasket	3	8
44	2	SJ-210-1	WCY00000S16040	the damping mounting p	1	45
45	2	SJ-209	WHJ00000S16017	Adjust rod welding assembly	1	A3
	3	SJ-209-1	WCY00000S16018	Adjust rod welding 1	1	A3
	3	SJ-209-2	WCY00000S16019	Adjust rod welding 2	1	A3
	3	SJ-209-3	WCM00000S16020	Adjust rod welding rod	1	A3
46	2	SW-8	WBZSW000008001	spring gasket	1	Ø8
47	2	2015-003		handel connecting 2	1	A3
48	2	STG8062Ae-26	ZZSPVCS18032	gear handel	2	PVC
49	2	SJ-223	ZWX000S16025	Bowl shrapnel	1	65Mn
50	2	NF-001-7-01	WCY00000S26075	ischarge chute wire fixed b	1	A3
51	2	FB-5*12*1.2	WBZPD051212001	gasket	8	Ø5*12*1.2
52	2	NF-001-7	WCY00000S26073	scharge chute wire fixed br	1	A3
53	2	HS-8*45	WBZHS008045001	bolt	2	M8*45
54	2	FB-8*16*1.2	WBZPD081612001	gasket	2	Ø8*16*1.2
55	2	NHLN-8	WBZHL000008001	lock nut	2	M8
56	2	NF-001-5	ZPS000S26081	Underside coaming	1	A3
57	2	HS-10*45	WBZHS010045001	bolt	1	M10*45
58	2	NHLN-10	WBZHL000010001	lock nut	1	M10
59	2	HS-6*12	WBZHS006012001	bolt	4	M6*12
60	2	NHLN-6	WBZHL000006001	lock nut	4	M6
61	2	NF-001-8	ZWX000S26077	gear plate welding set	1	Q235
	3	NF-001-8-1	WCY00000S26078	gear plate	1	Q235 184*92.5*15
	3	NF-001-8-2	WCM00000S26079	gear handel	1	Q235 M8*Ø16*28
62	2	FB-10*28*3	WBZPD102830001	gasket	1	Ø10*28*3
63	2	STG11 (13) 70 (10) AE-02-08	WTH00000S26083	handel adjust spring	1	
64	2	NF-001-4-02	WCY00000S26070	gear fixed bracket	1	A3
65	2	SW-8	WBZSW000008001	spring gasket	1	Ø8
66	2	2015-002		handle connecting 1	1	A3
67	2	NF-001-14-3	WTH00000S26082	clutch handle spring 3	1	65Mn
68	2	SJ-231	LKZ3101150001	walking wire	1	
69	2	NF-002-R-B	ZPS000S26061	handrail upper tube wel	1	
	3	NF-002A(R)	ZJG000S26062WS	handrail upper tube	1	
	3	2011-KEY-05	ZHJ000S26063WS	right clutch fixed plate welding comp.	1	
	3	2011-KEY-05-01	ZJG000S26064WS	right clutch fixed plate	1	
	3	2011-KEY-01-03	ZJG000S26060WS	clutch fixed sleeve	1	
	3	SJ-236	ZJG000S16037WS	wire fixed block	1	
70	2	2011-SX-11-031-2	ZWX000S26067	right handel	1	A3
71	2	SJ-047-1	ZZS0PUS05086	SJ rubber cap	1	PU

72	2		05.1.10.011	PPGO plastic plate(2015-1	1	PP
	2		05.1.10.012	PPGO plastic plate(2015-1	1	
73	2		WBZFN000008001	flange nut	1	M8
74	2	GPP6562C-01-07	WCM00000S05130	adjusting handel upper conn	1	Q235
75	2	GPP6562C-01-09	WTH00000S05131	adjustable speed adjusting sprin	2	65Mn
76	2		WBZPD082220001	gasket	1	A3 Ø8*22*2
77	2		WBZKK025035001	cotter pin	1	65Mn 2.5*25
78	2	NF-001-18	WCM00000S26084	gear connecting rod	1	
79	2		WBZPD081612001	gasket	1	A3 Ø8*16*1.2
80	2	NJ-02	WTH00000S05019	pin buckle	1	A3
81	2	STG11(13)70(10)AE-02-02-03	WHJ00000S26023	fork arm	1	Q235
	3	STG11(13)70(10)AE-02-02-03-	WCY00000S26024	fork arm plate	1	
	3	STG11(13)70(10)AE-02-02-03-	WCM00000S26025	fork arm sleeve	1	
82	2		WBZJX006030001	Cotter pin	1	65Mn Ø6*30
83	2	HS-5*35	WBZHS005035001	bolt	2	M5*35
84	2	SX-11-029	ZZS0PPS22061	handel seat	2	PP黑色
85	2	NHLN-5	WBZHL000005001	lock nut	4	
86	2	SX-11-028	ZZS0PPS22062	handel	2	PP黑色
87	2	SX-11-027	WCM00000S22063	slotted small plate head	2	
88	2		13.1.10.01.005	Head lamp	1	组件 12V
89	2	SW-5	WBZSW000005001	spring gasket	1	Ø6
90	2	HS-6*16	WBZHS005016001	bolt	1	M6*16
91	2	2015-001		hang seat	1	Q235-A
92	2	SH-4.2*12	WBZSH04801200	recessed pan head tapping s	1	
93	2	STG8027BS-035		Rocker damping sleeve	1	



STG6562Ae-01

STG6562-1A spare parts list

NO.	CODE	CHINESE NAME	ENGLISH NAME	MATERIAL	QUANTITY
1	SJ-205B	右手柄总成	Handle assembly		1
2	SJ-217	手柄固定套	Handle sleeve	A3	2
3	SJ-221	凸轮连杆	cam Connecting handle	A3	2
4	SX-11-001B	右手把弹簧	Right handle spring	50CrVA	1
5	SJ-203	凸轮支架（右）	cam bracket (right)	A3	1
6	SJ-258	单手操作自锁片		粉末冶金	1
7	SX-11-02	离合器1-2	clutch 1-2	粉末冶金	1
8	SJ-204	凸轮支架（左）	cam bracket (left)	A3	1
9	SX-11-001	左手把弹簧	Left handle spring	50CrVA	1
10	SJ-205A	左手柄总成	adjusting crank		1
11	SX-11-007	弹簧3	spring 3	65Mn	1
12	SJ-213	固定板焊接图	Dead plate welding drawing		1
13	SJ-241	调节杆手柄	Adjusting lever handle	橡胶	2
14	SJ-209-4	调节连接杆	Adjusting joint rod	A3	1
15	SJ-209	调节杆焊接组图	Adjuster lever welding drawing		1
16	SJ-215	U形卡片	U fiche	65Mn	4
17	SJ-224	葫芦形卡片	Pear-Shaped fiche	65Mn	8
18	SJ-206	弧形垫片		65Mn	4
19	SX-11-03	离合器1-1	clutch 1-1	粉末冶金	1
20	SJ-210-2	调节阻尼安装板2	Adjuster damp fixing plate 2	45	1
21	SJ-223	碗形弹片	Bowl shrapnel	65Mn	4
22	SB-158	平垫	plain cushion		4
23	SJ-042-2	扶手	Handle		1
24	SJ-210-1	调节阻尼安装板1	Adjuster damp fixing plate 1	45	1
25	SJ-246	豪华型面板	Operation Panel	PP	1
26	SB-124	平垫	plain cushion		2
27	SB-125	外六角螺母	hexagonal Nut		2
28	SB-126	防松螺母	lock nut		2
29	SJ-028	SJ扶手杆垫片	SJ Handle mat	A3	2
30	SB-127	内六角半圆柱头螺栓	inner hexagonal half column bolt		2
31	SB-128	外六角法兰螺丝	hexagonal flange screw		2
32	SJ-026	SJ端盖轴套	SJ Head shaft bushing	铜基粉末冶金	2
33	SJ-003	SJ大齿轮	SJ Large gear	QT600-3	1
34	SB-018	半圆键	Semicircular key	45#	2
35	SB-019	直槽轻型弹性圆柱销	Pin		1
36	SJ-017-2	SJ驱动轮轴	SJ Drive wheel axle	45#	1
37	SJ-066	SJ弹簧销	SJ Spring Pin	65Mn	2
38	SB-020	平垫	plain cushion		2
39	SB-21A	轮胎	Tyre		1
40	SJ-134	汽油机	Gasoline Engine		1
41	SB-022	外六角螺丝	hexagonal Screw		2

42	SB-023	平垫	plain cushion		2
43	SJ-031	SJ皮带轮罩壳	SJ Pulley Cover	聚乙烯/ABS	1
44	SB-024	防松螺母	lock nut		4
45	SB-025	平垫	plain cushion		4
46	SB-016	平垫	plain cushion		2
47	SJ-214	档位杆固定套	Gear lever fixed hub	A3	1
48	SJ-211	挂档架焊接图	Gear frame welding drawing		1
49	SJ-233	拉线销	wire pin	A3	5
50	SB-130	开口销	hatch pin		5
51	SJ-238	斜齿支架垫圈	bracket washing	尼龙66	2
52	SJ-227-2	出雪口斜齿摇杆	Chute rocker	A3	1
53	SB-131	弹性圆柱销	Spring-type straight pin		1
54	SJ-208	斜齿轮	spiral gear	45	1
55	SJ-212	出雪口摇杆固定架	Chute rocker fixed bracket	45	1
56	SB-031	防松螺母	lock nut		6
57	SB-032	平垫	plain cushion		6
58	SJ-103B-2	SJ传动箱罩壳	SJ Gearbox Cover	A3	1
59	SB-033	外六角螺丝	hexagonal Screw		4
60	SB-034	外六角螺丝	hexagonal Screw		1
61	SB-035	外六角螺丝	hexagonal Screw		1
62	SB-036	防松螺母	lock nut		3
63	SJ-242	摇杆手柄套	Rocker handle sleeve	PE	1
64	SJ-240	摇杆手柄	Rocker handle	PVC (硬)	1
65	SJ-227	出雪口摇杆	chute rocker crank	A3	1
66	SB-039	外六角螺丝	hexagonal Screw		2
67	SB-040	平垫	plain cushion		1
68	SJ-102	SJ传动箱罩板	SJ Gearbox Cover	铁板	1
69	SB-041	平垫	plain cushion		4
70	SB-042	外六角螺丝	hexagonal Screw		4
71	SB-043	防松螺母	lock nut		1
72	SJ-045	SJ小张紧板	SJ Small tension arm	A3	1
73	SJ-046-1	小张紧板凸垫	SJ Tension convex plank	A3	1
74	SB-044	外六角螺丝	hexagonal Screw		1
75	SJ-035-1	SJ弹簧3	Spring 3	65Mn	1
76	SX-11-170B	小张紧轮凸垫	Small tension convex washer	A3	1
77	SB-045	外六角螺丝	hexagonal Screw		1
78	SB-046	平垫	plain cushion		2
79	SX-11-170	小张紧轮(加轴承)	Small Tension pulley (+Bearing)	-	1套
80	SJ-008C	垫衬	Pad	A3	1
81	SB-047	外六角螺丝	hexagonal Screw		1
82	SJ-049	SJ主同步轮	SJ Main synchromesh pulley	铝	1
83	SB-048	平垫	plain cushion		1

84	SB-049	外六角法兰螺丝	hexagonal flange screw		1
85	SJ-049B-3	SJ主皮带轮	SJ Main pulley	HT200	1
86	SB-132	V型皮带	V-belt		1
87	SB-051	同步带	Synchro-belt		1
88	SB-052	六角螺丝	Hexagonal Screw		1
89	SB-053	平垫	plain cushion		3
90	SB-054	带止动槽深沟球轴承	lock		1
91	SX-11-005	离合器销	clutch pin	A3	1
92	SJ-005	SJ六角变速轴	SJ Hexagon gear shaft	40Cr	1
93	SJ-013C	SJ变速轮	SJ Change wheel	粉末冶金	1
94	SB-055	外六角螺丝	Hexagonal Screw		3
95	SJ-013D	SJ变速轮橡胶圈	SJ Change wheel Circle	丁苯橡胶	1
96	SJ-013A	SJ变速轮大垫圈	SJ Change wheel washer	铁板	2
97	SB-056	外六角螺丝	Hexagonal Screw		3
98	SJ-013B	SJ变速轮轴盖	SJ Change wheel cover	铁板	2
99	SB-057	轴用卡簧	Circlip for shaft		1
100	SB-058	深沟球轴承	Deep slot bearing		1
101	SB-059	平垫	plain cushion		1
102	SB-060	螺母	Nut		1
103	SJ-002	SJ直角铁块	SJ Orthogonal Iron	铁板	1
104	SB-061	外六角螺丝	Hexagonal Screw		2
105	SJ-040	SJ拨叉	SJ Gearlever	A3	1套
106	SJ-010A	SJ传动同步轮	SJ driving sync wheel	铝	1
107	SJ-010B	SJ传动皮带轮轴	SJ Driving wheel shaft	45#	1
108	SB-062	深沟球轴承	Deep slot bearing		2
109	SJ-007	SJ皮带轮支架	SJ Pulley bracket	A3	1套
110	SB-063	销子	Pin	65Mn	1
111	SB-064	防松螺母	lock nut		1
112	SJ-069	弹簧6	Spring 6	65Mn	1
113	SJ-107	SJ隔套	SJ Separate Sleeve	粉末冶金	1
114	SB-065	平垫	plain cushion		1
115	SB-066	插销	pin		1
116	SJ-015	SJ滑轮安装板2	SJ Pulley subpanel 2	铁板	1
117	SB-067	平垫	plain cushion		2
118	SB-068	外六角螺丝	Hexagonal Screw		2
119	SJ-231	行走拉线	stepped wire		1
120	SB-133	十字平头自攻螺钉	Cross crop bolt		4
121	SJ-008	SJ大张紧轮2(加轴承)	SJ Tension pulley 2 (+Bearing)	-	1套
122	SJ-008B	SJ垫套	SJ Washer	A3	1
123	SB-069	外六角螺丝	Hexagonal Screw		1
124	SJ-008C	SJ垫衬	SJ Pad	A3	1
125	SB-070	防松螺母	lock nut		1
126	SB-071	防松螺母	lock nut		1

127	SB-072	平垫	plain cushion		1
128	SJ-023-2	SJ固定板	SJ Dead plate	铁板	A3
129	SJ-230	蛟龙拉线	Auger wire		1
130	SJ-050	SJ六角螺丝1	SJ Hexagonal Screw 1	35#	1
131	SJ-037	弹簧5	Spring 5	65Mn	1
132	SB-073	平垫	plain cushion		2
133	SB-074	防松螺母	lock nut		1
134	SB-075	外六角螺丝	Hexagonal Screw		1
135	SB-076	平垫	plain cushion		1
136	SJ-039-2	SJ大皮带轮	SJ Large Pulley	HT250	1
137	SB-077	防松螺母	lock nut		1
138	SJ-004	SJ圆底盖	SJ Rockered Cover	A3	1
139	SB-078	方键	Square Key	45#	1
140	SB-079	带座外球面球轴承	Pillow block bearing		1
141	SJ-239	斜齿支架摇杆垫圈	Rocker washer	尼龙66	1
142	SJ-229	挂档拉线2	Gear wire 2		1
143	SJ-228	挂档拉线1	Gear wire 1		1
144	SB-081	半园头方颈螺丝	Cup head square neck bolt		4
145	SJ-225	斜齿支架	bracket	A3	1
146	SB-082	防松螺母	lock nut		2
147	SB-083	平垫	plain cushion		1
148	SB-084	防松螺母	lock nut		2
149	SB-085	半园头方颈螺丝	Cup head square neck bolt		2
150	SB-086	防松螺母	lock nut		4
151	SJ-006-2	SJ长挡板	SJ Shave Plate	A3	1
152	SB-087	半园头方颈螺丝	Cup head square neck bolt		2
153	SB-088	平垫	plain cushion		4
154	SB-089	防松螺母	lock nut		2
155	SB-090	平垫	plain cushion		2
156	SJ-111	SJ滑撬	SJ Sliding Stick	A3	2
157	SJ-104-2	SJ大罩壳	SJ Steel Cover	A3	1
158	SJ-022-2	SJ输出轴	SJ Output Shaft	45#	1
159	SB-091	半圆键	Semicircular key		1
160	SB-092	防松螺母	lock nut		2
161	SJ-070	非标螺丝	Not-Standard Screw		2
162	SJ-067-2A	SJ左搅龙	SJ Left Auger	A3	1
163	SJ-019	SJ驱动轴小套	SJ Drive Shaft Sheath	聚甲醛	1
164	SB-093	平垫	plain cushion		2
165	SJ-020	SJ轴套	SJ Shaft bushing	聚甲醛	2
166	SJ-024	SJ轴承盖	SJ Bearing Cover	铁板	2
167	SB-094	平垫	plain cushion		6
168	SB-095	外六角螺丝	Hexagonal Screw		6
169	SJ-067-2B	SJ右搅龙	SJ Right Auger	A3	1
170	SB-096	外六角螺丝	Hexagonal Screw		6
171	SB-097	弹簧垫圈	Spring washer		7

172	SB-098	平垫	plain cushion		7
173	SJ-038	SJ蜗轮	SJ Worm Wheel	ZCuA110Fe3	1
174	SJ-101	SJ上底座	SJ Upper Pedestal	ZL102	1
175	SJ-108-1	SJ输出轴套	SJ Shaft bushing	粉末冶金	2
176	SJ-019	SJ驱动轴小套	SJ Drive Shaft bushing	聚甲醛	3
177	SJ-101A	SJ底座	SJ Pedestal	ZL102	1
178	SB-099	深沟球轴承	Deep slot bearing		1
179	SJ-030	SJ传动蜗轮轴	SJ Drive Worm shaft	40Cr	1
180	SB-100	深沟球轴承	Deep slot bearing		1
181	SB-101	单向推力球轴承	One direction thrust bearing		1
182	SB-102	油封	oil seal		1
183	SB-103	销子	Pin	65Mn	2
184	SJ-057	隔圈	Washer	A3	1
185	SJ-001	SJ风扇	SJ Fan	-	1套
186	SB-104	半园头方颈螺丝	Cup head square neck bolt		4
187	SB-105	平垫	plain cushion		2
188	SB-106	防松螺母	lock nut		2
189	SB-107	防松螺母	lock nut		2
190	SB-108	外六角螺丝	Hexagonal Screw		2
191	SB-109	防松螺母	lock nut		6
192	SJ-021	出雪口压片	chute sheeting	A3	3
193	SJ-021C	出雪口垫片	Chute mat	A3	6
194	SB-120	外六角螺丝	Hexagonal Screw		6
195	SJ-237	出雪口座塑料圈	chute pedestal plastic circle	尼龙66	1
196	SJ-232	出雪口拉线	chute wire		1
197	SJ-226	出雪口拉簧	chute extension spring	65Mn	1
198	SJ-200A SJ-200B	出雪口	Chute		1套
199	SB-134	外六角螺丝	Hexagonal Screw		1
200	SJ-036	弹簧4	Spring 4	65Mn	1
201	SB-114	法兰螺母	Flange Nut		1
202	SJ-012	SJ弯杆套件	SJ Discharge Chute Accessories	-	1套
203	SJ-150	塑料铲	plastic shovel	PP	1
204	SB-110	半园头方颈螺丝	Cup head square neck bolt		2
205	SJ-151	铲座	shovel bracket	PP	1
206	SJ-113	纸垫	Washer	绝缘纸板	1
207	SB-115	六角螺丝	Hexangular Screw		1
208	SB-121	法兰螺丝	Flange Screw		2
209	SJ-130	隔热罩	Thermally insulated shroud	A3	1
211	SB-117	波形垫片	rubber Washer		1
212	SB-116	加油嘴	zerk		1
213	SB-119	一字螺栓	Slotted Screw		1
214	SB-135	平垫	plain cushion		2

215	SB-136	防松螺母	lock nut		2
216	SB-137	外六角螺栓	Hexangular Screw		4
217	SB-138	防松螺母	lock nut		4
219	SB-140	防松螺母	lock nut		2
220	SB-141	外六角螺栓	Hexangular Screw		1
221	SB-142	弹性圆柱销	Spring pin		1
222	SB-143	防松螺母	lock nut		1
223	SB-144	平垫	plain cushion		2
224	SB-145	开口销	hatch pin		3
225	SB-146	船形开关	switch		1
226	SB-147	电灯	lamp		1
227	SB-148	电灯固定架	Lamp fixed bracket	PP	2
228	SB-149	十字槽自攻螺丝	Cross recessed pan tapping screw		4
229	SJ-023-2	张紧螺栓	Tension bolt	A3	1
230	SB-150	防松螺母	lock nut		1
231	SB-151	外六角法兰螺栓			1
232	SB-152	平垫			2
233	SB-153	防松螺母			1
234	SB-154	十字槽盘头螺丝			2
235	SJ-200-8	出雪口尼龙垫片		尼龙66	4
236	SB-155	防松螺母			2
237	SJ-120	电瓶盖		PP	1
238	SB-156	外六角螺栓			1
239	SB-157	外六角螺母			1
240	SJ-121	电瓶			1
241	SB-123	卡簧			1
242	SJ-261	出雪口线压先弹簧		65Mn	1
243	SJ-209B	右调节杆焊接组图			1
244	SJ-251A	调节焊接杆			1
245	SB-159	防松螺母			1
246	SJ-252	调速杆弹簧		65Mn	1
247	SB-160	外六角螺栓			1
248	SJ-253	碟杀器			1
249	SB-161	内六角圆柱头螺栓			2
250	SB-162	外六角螺栓			4
251	SB-163	防松螺母			4
252	SJ-042-2A-2	扶手分体2		A3	2
253	SG5580A.23-	28线夹		PE	2
254	SJ-254	拉线固定锁		PP	1
255	SB-164	扶手塑料盖		橡胶	2
256	SJ-260	碟杀器拉线			1
257	SB-165	油封			2
258	SJ-209-4-2	调节连接杆2		A3	1
259	SB-137	外六角螺栓			4
260	SB-138	防松螺母			4

261	SB-166	法兰面自攻锁紧螺钉		2
262	SJ-200-8	出雪口尼龙垫片	尼龙66	2